

RESULTADOS SUBASTA DE FONTERRA

El evento comercial 372 se llevó a cabo el martes 21 de enero de 2025.

Whole Milk Powder (WMP)	
Precio ganador promedio (USD/TM, FAS)	\$3.988
Variación del índice de precios de correspondiente a WMP comparado con el evento anterior	+5,0%

Changes in WMP Price Index

	Contract 1 Feb25	Contract 2 Mar25	Contract 3 Apr25	Contract 4 May25	Contract 5 Jun25	Contract 6 Jul25
Change in WMP Price Index from previous event	+4.2%	+5.1%	+5.4%	+4.9%	+3.4%	n.a.

Average Price Per Region (USD/MT)

	Contract 1 Feb25	Contract 2 Mar25	Contract 3 Apr25	Contract 4 May25	Contract 5 Jun25	Contract 6 Jul25
Oceania						
New Zealand						
Regular Average Price	\$3,950	\$3,945	\$3,950	\$3,960	\$3,975	n.a.
Instant Average Price	\$4,045	\$4,040	\$4,045	\$4,055	\$4,070	n.a.
UHT Average Price	\$4,035	\$4,020	\$4,025	\$4,070	n.a.	n.a.
New Zealand Average Price	\$3,979	\$3,974	\$3,987	\$4,004	\$4,033	n.a.
Oceania Average Price (USD/MT, FAS)	\$3,979	\$3,974	\$3,987	\$4,004	\$4,033	n.a.
Average Price (USD / MT)	\$3,989	\$3,978	\$3,994	\$4,004	\$4,033	n.a.

Fuente: Global Dairy Trade

El evento comercial 372 se llevó a cabo el martes 21 de enero de 2025.

Skim Milk Powder (SMP)	
Precio ganador promedio (USD/TM, FAS)	\$2.729
Variación del índice de precios de correspondiente a SMP comparado con el evento anterior	+2,0%

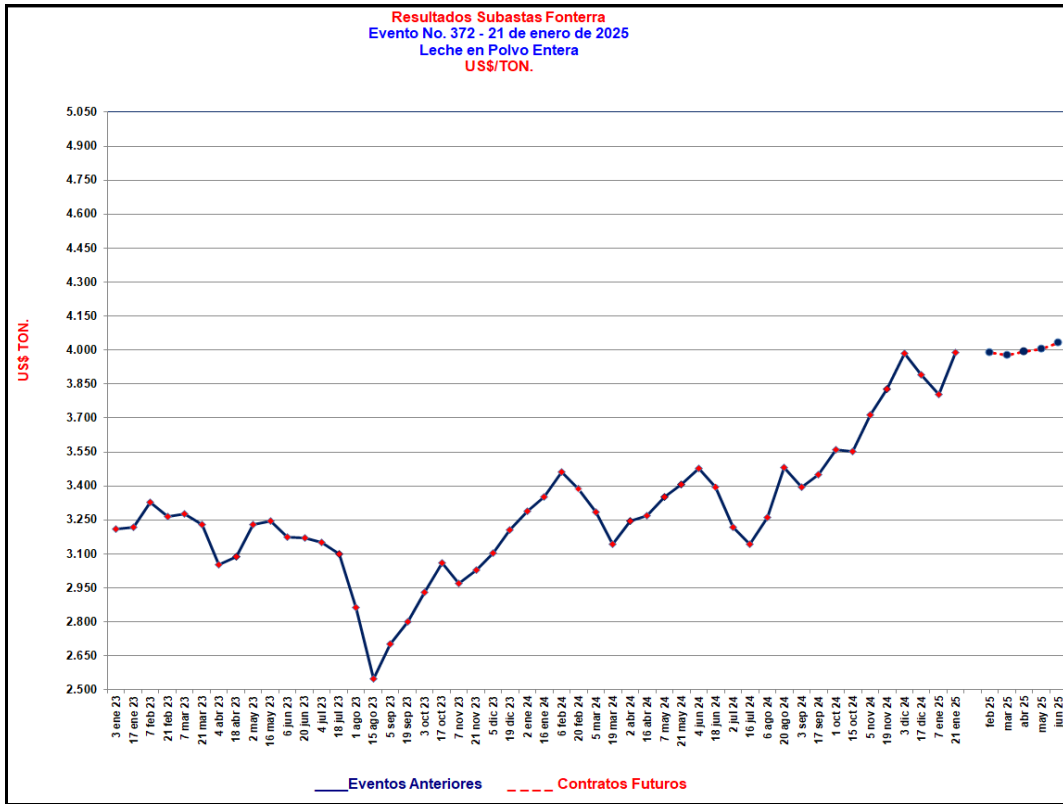
Changes in SMP Price Index

	Contract 1 Feb25	Contract 2 Mar25	Contract 3 Apr25	Contract 4 May25	Contract 5 Jun25	Contract 6 Jul25
Change in SMP Price Index from previous event	+0.6%	+1.3%	+3.3%	+3.4%	+1.6%	n.a.

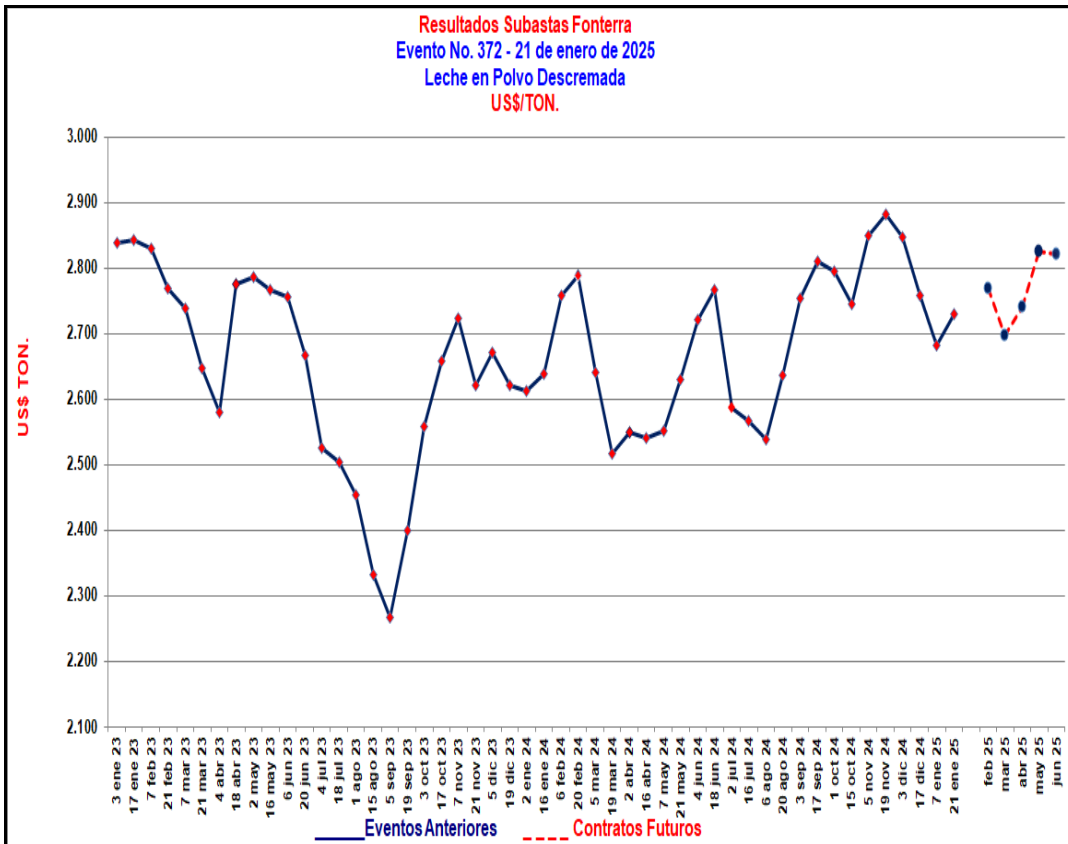
Average Price Per Region (USD/MT)

	Contract 1 Feb25	Contract 2 Mar25	Contract 3 Apr25	Contract 4 May25	Contract 5 Jun25	Contract 6 Jul25
Oceania						
New Zealand						
Low Heat Average Price	n.a.	n.a.	\$2,850	\$2,860	n.a.	n.a.
Medium Heat Average Price	\$2,815	\$2,800	\$2,840	\$2,820	\$2,820	n.a.
UHT Average Price	n.a.	\$2,860	\$2,900	\$2,910	n.a.	n.a.
New Zealand Average Price	\$2,815	\$2,800	\$2,852	\$2,826	\$2,820	n.a.
Oceania Average Price (USD/MT, FAS)	\$2,815	\$2,800	\$2,852	\$2,826	\$2,820	n.a.
Average Price (USD / MT)	\$2,768	\$2,698	\$2,740	\$2,826	\$2,820	n.a.

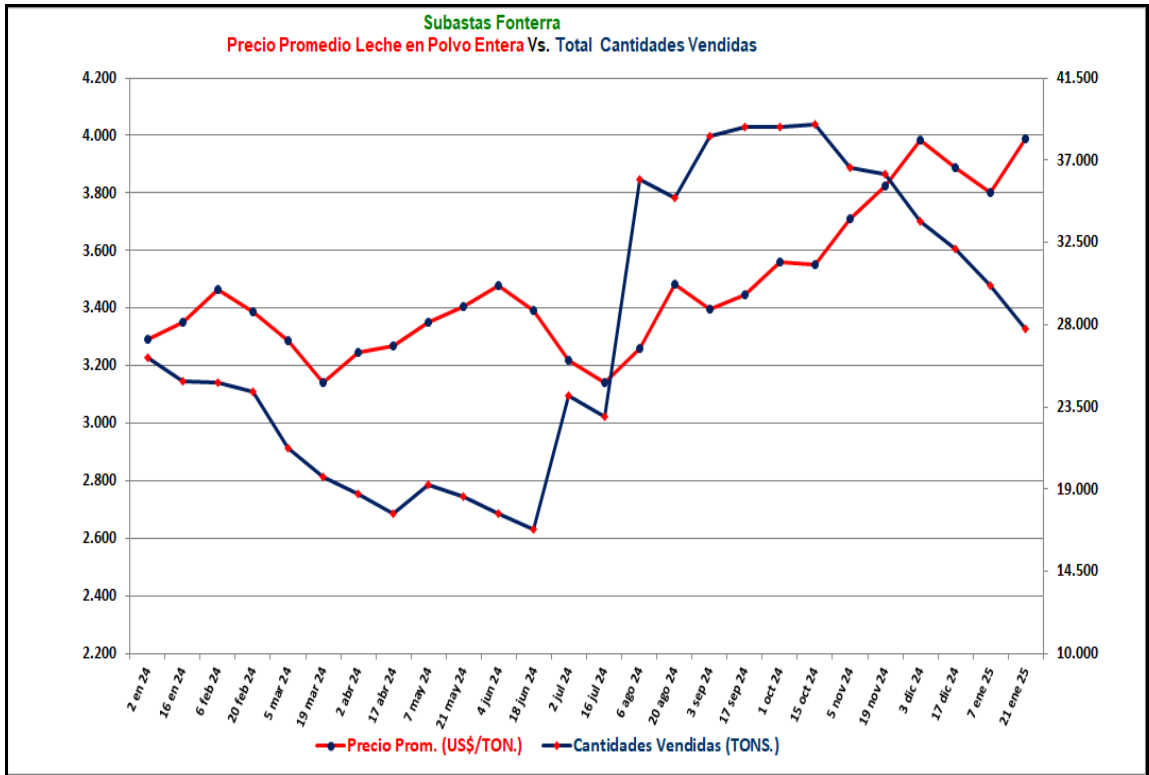
Fuente: Global Dairy Trade



Fuente: Global Dairy Trade.
 Gráfica: FEDECOOLECHE.



Fuente: Global Dairy Trade.
 Gráfica: FEDECOOLECHE.



Fuente: Global Dairy Trade.

Gráfica: FEDECOOLECHE.